



**FASTEC
SLAB SERIES**

manual

www.myfastec.com

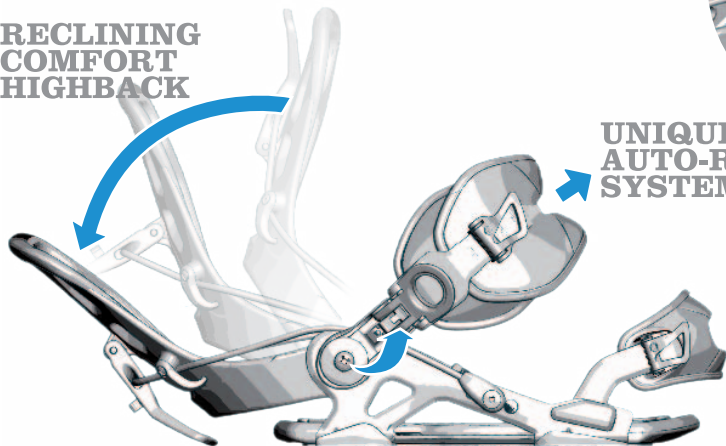


FASTEG
BINDING SYSTEM

the best of all systems



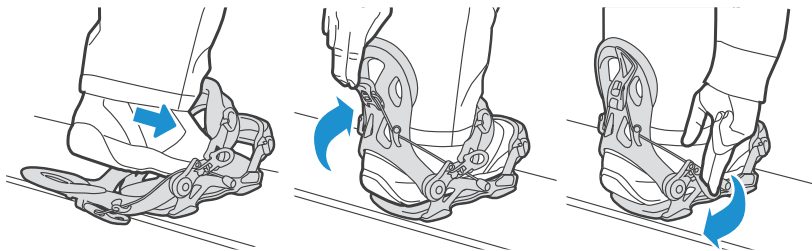
**RECLINING
COMFORT
HIGHBACK**



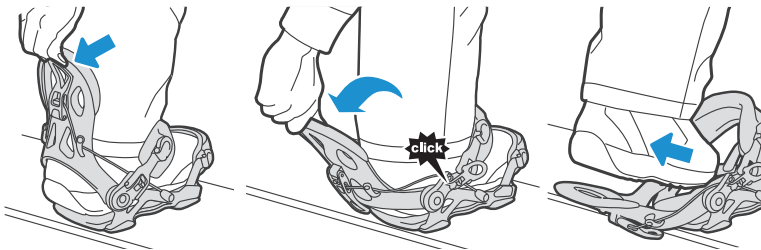
**UNIQUE
AUTO-RELEASE
SYSTEM**

**EASY IN,
ULTIMATE
FIT,
TOTAL
CONTROL**

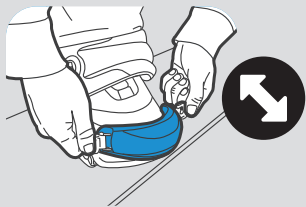
in ▶



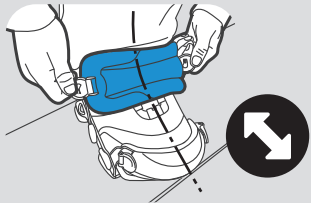
out ▶



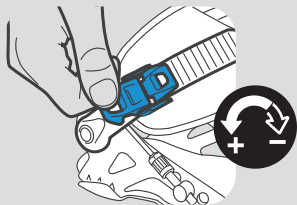
1



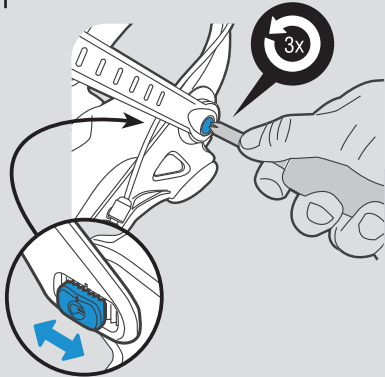
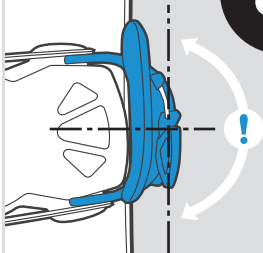
2

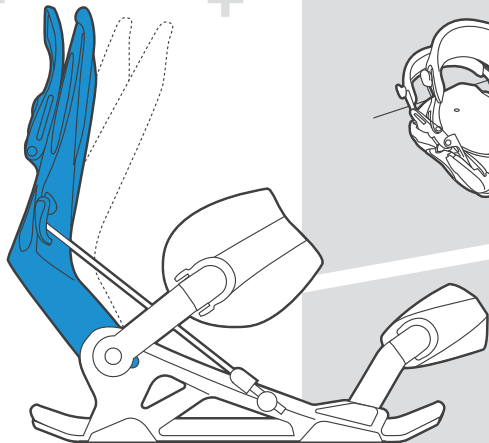


2a

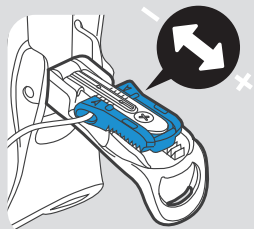
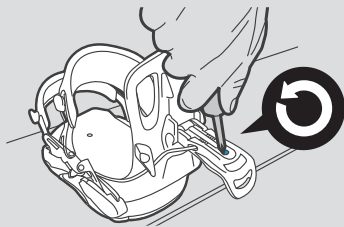


3

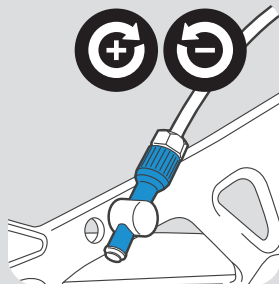




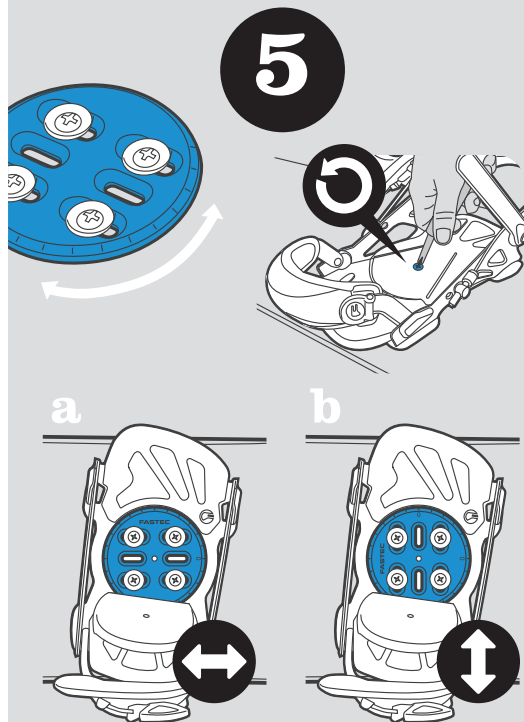
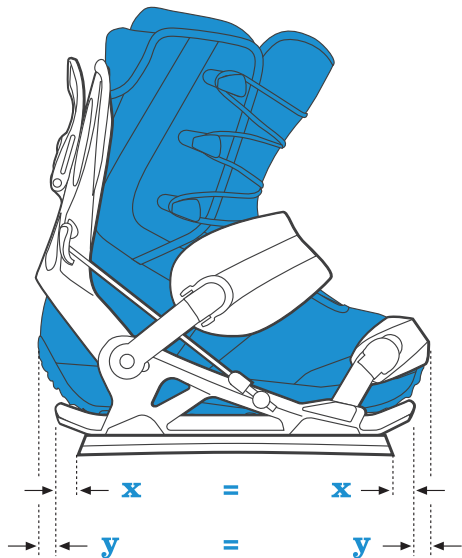
4a



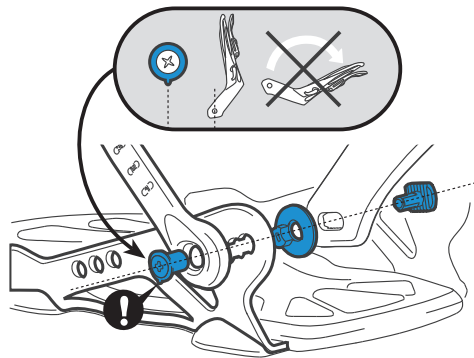
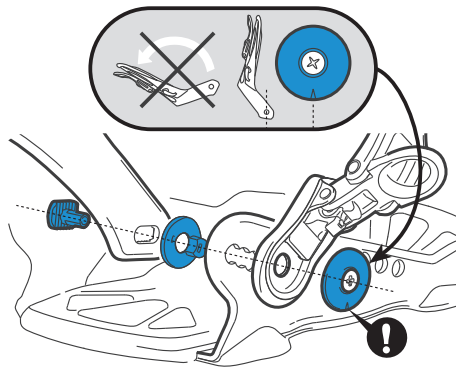
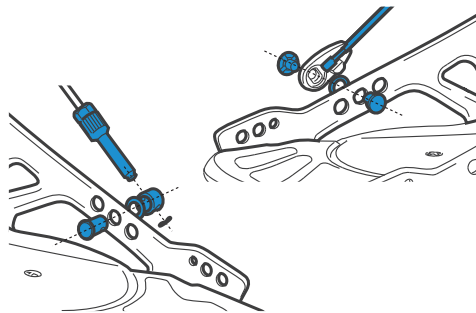
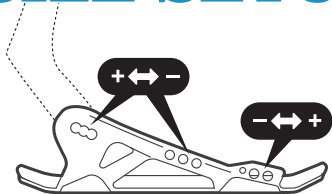
4b



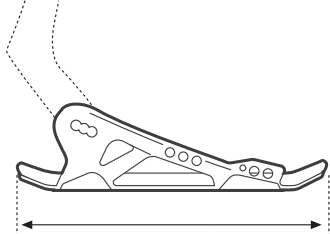
CENTER



SIZE SETUP



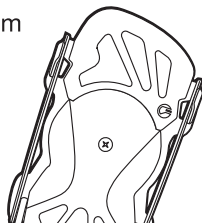
SIZE TABLE



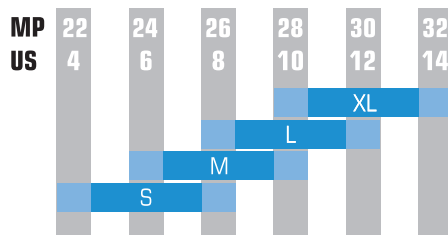
base size

footbed

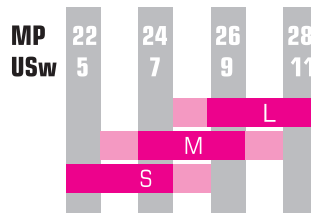
XL	265 mm
L	250 mm
M	250 mm
S	235 mm



MNS



WMNS



perfect

possible



- **EASY HANDLING**
- **ULTIMATE FIT**
- **PERFECT SUPPORT**
- **AUTO RELEASE**

cover: **steve gruber** | by alex papis

©2011 SP UNITED